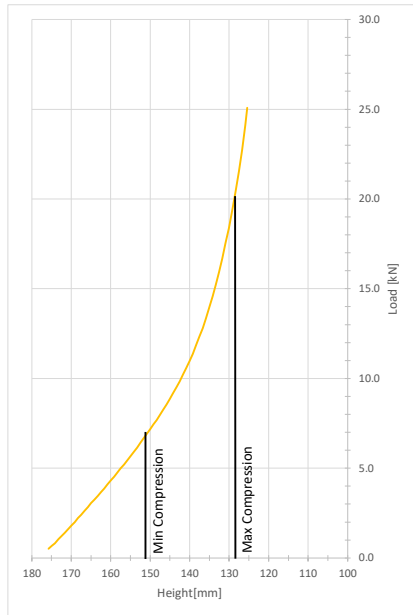
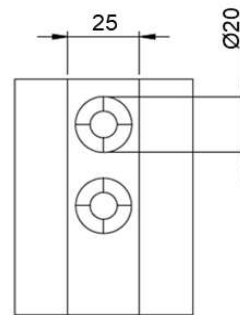
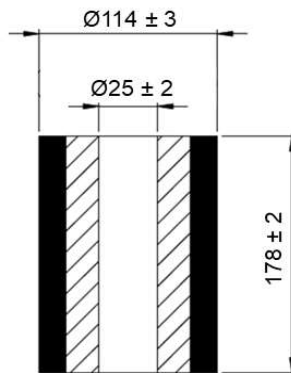


Continental SAM

DN 114 DH 178 IN 25



Compression [%]	15	20	22.5	25	27.5
Load [kN]	6.9	10.2	12.3	15.2	20.4
Height [mm]	151	142	138	133	128
Spring Rate [kN/m]	309	441	596	836	1316
Effective Deflection [mm]	22	23	21	18	15
Natural Frequency [Hz]	3.3	3.3	3.5	3.7	4.0
Maximum OD [mm]	124	128	130	132	134
Weight [Kg]	1.79				



Continental SAM is the solution for spring replacement and vibration isolation. With its resistant, durable and economical design it helps to cut costs in nearly all industrial applications.

- > better working conditions due to a dramatically reduced noise level
- > reduced downtimes
- > compact design
- > high load-bearing capacity
- > reliable even in damp or corrosive conditions
- > maintenance-free
- > safe due to the absence of moving parts
- > reliable even in extreme temperatures (-40°F to 167°F, -40°C to +75°C)